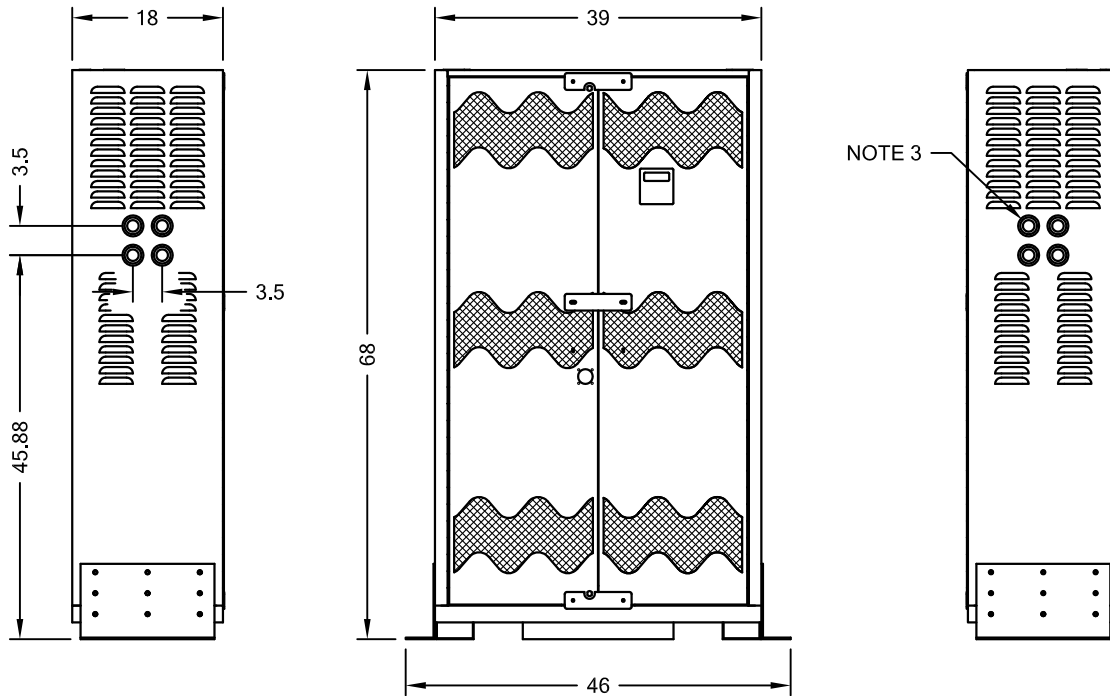
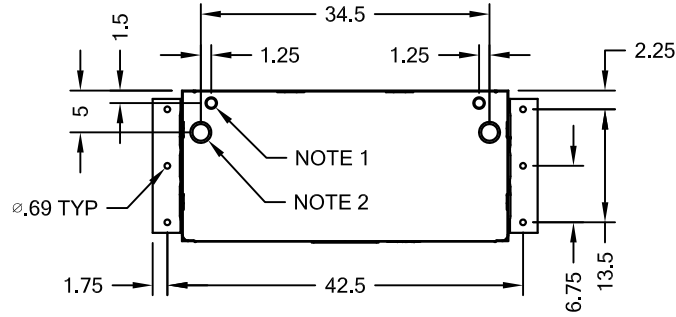


REVISION				
REV	ECO	DESCRIPTION	DATE	APPV'D
X1		PRELIMINARY	2/23/17	H.B.



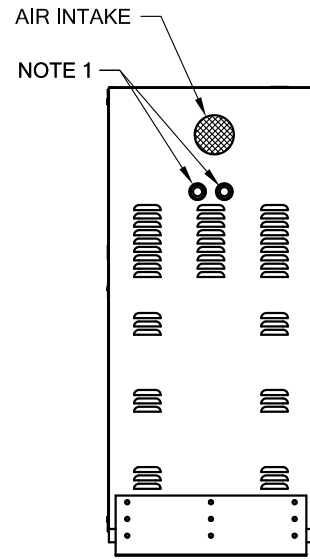
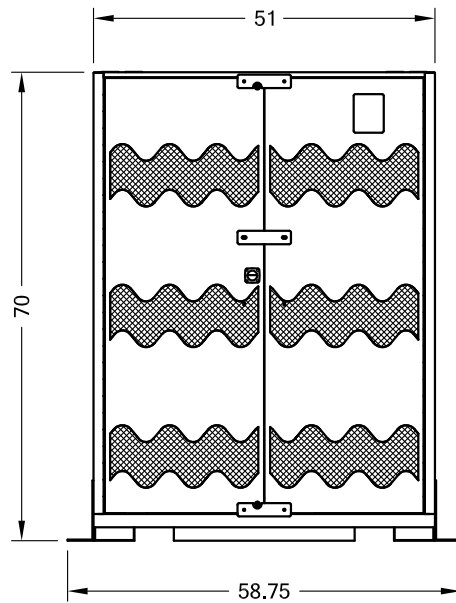
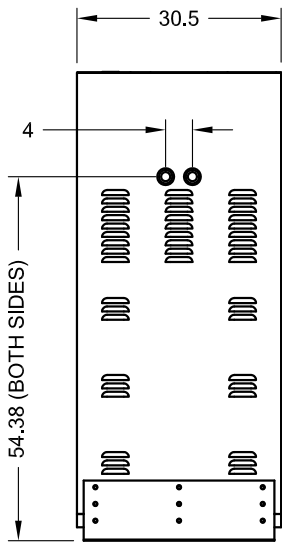
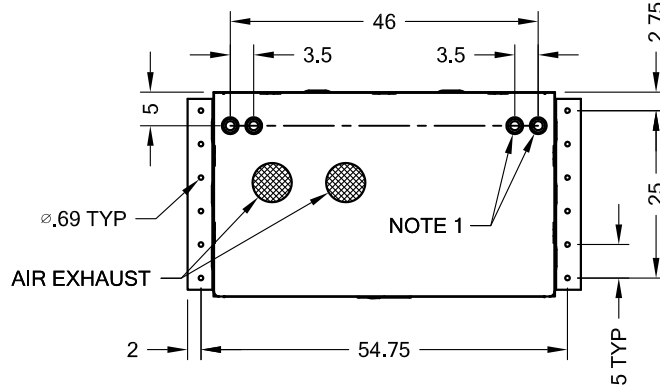
3KW THRU 8KW

NOTES:

- 1) DBL KNOCKOUT FOR 3/4" AND 1" CONDUIT.
- 2) DBL KNOCKOUT FOR 1.5" AND 2" CONDUIT.
- 3) TRIPLE KNOCKOUT FOR 1", 1.5" AND 2" CONDUIT.
- 4) CONSTRUCTION: INDOOR, OSHPD RATED.
- 5) FINISH: COLOR BLACK.
- 6) 7.5KW CAN BE IN 39" WIDE OR 51" WIDE CABINET DEPENDING ON THE BATTERY TYPE.

UNLESS OTHERWISE SPECIFIED, DIMENSIONS ARE IN INCHES. TOLERANCES ARE: DECIMALS FRACTIONS ANGLES .XX ± .03 ± 1/64 ± 1/2° .XXX ± .010		PERFECT POWER SYSTEMS LOS ANGELES, CA		
CADD: HAI NGUYEN 2/23/17		TITLE 1PH INVERTER, 90 MIN. OSHPD CERTIFIED		
CHKD: HAI NGUYEN 2/23/17		SIZE DWG A	6001-380P	REV X1
APPVD: H. BAIK 2/23/27		SCALE:	EST. WT:	SHT 1 OF 1
SPECIFICATIONS SUBJECT TO CHANGE WITHOUT NOTICE				

REVISION				
REV	ECO	DESCRIPTION	DATE	APPROVED
X1		PRELIMINARY	2/23/17	H.B.



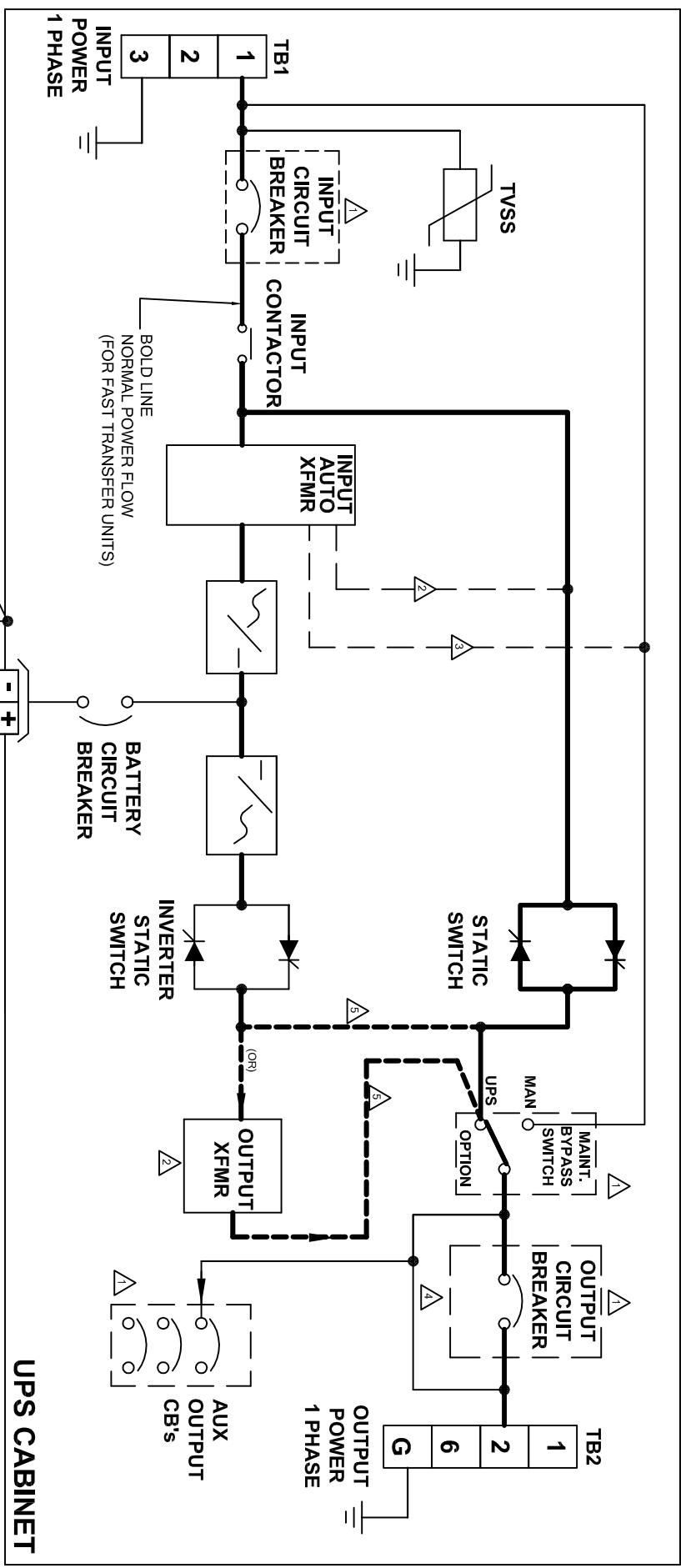
7.5KW, 10KW THRU 17KW

NOTES:

- 1) TRIPLE KNOCKOUT FOR 1", 1.5" AND 2" CONDUIT.
- 2) CONSTRUCTION: INDOOR, OSHPD RATED.
- 3) FINISH: COLOR BLACK.
- 4) 7.5KW CAN BE IN 39" WIDE OR 51" WIDE CABINET DEPENDING ON THE BATTERY TYPE.

UNLESS OTHERWISE SPECIFIED, DIMENSIONS ARE IN INCHES. TOLERANCES ARE: DECIMALS FRACTIONS ANGLES .XX ± .03 ± 1/64 ± 1/2° .XXX ± .010		PERFECT POWER SYSTEMS LOS ANGELES, CA		
CADD: HAI NGUYEN 2/23/27		TITLE 1PH INVERTER, 90 MIN. OSHPD CERTIFIED		
CHKD: HAI NGUYEN 2/23/17	SIZE DWG	6001-379P		REV X1
APPVD: H. BAIK 2/23/17	SCALE:	EST. WT:	SHT 1 OF 1	
SPECIFICATIONS SUBJECT TO CHANGE WITHOUT NOTICE				

REVISION		DATE	APPROVED
REV	ECO		
A	8323	01/07/07	H.BAIK
B	9550	7/12/11	H.BAIK
C	9835	8/10/12	H.BAIK



- NOTES: (UNLESS OTHERWISE SPECIFIED)
- 1 ALL DOTTED LINE ARE OPTIONAL.
 - 2 USE FOR DIFFERENT INPUT/OUTPUT VOLTAGE UNITS.
 - 3 CONNECT THIS WAY FOR DIFFERENT INPUT/OUTPUT VOLTAGE UNITS.
 - 4 IN CASE OF OUTPUT CB / AUX OUTPUT CB BOTH USED, WIRES AUX CB'S TO MBS OUTPUT.
 - 5 FAST TRANSFER UNITS (INVERTER IS AT STAND-BY MODE WITH OR WITHOUT OUTPUT XFMR).

UNLESS OTHERWISE SPECIFIED,
DIMENSIONS ARE IN INCHES.
TOLERANCES ARE:
DECIMALS FRACTIONS ANGLES
.XX ±.03 ± 1/64 ± 1/2°
.XXX ±.010

CADD: S.SHAHSAVARI 10/12/10
CHKD: S.S. 10/12/10
APPVD: H.BAIK 10/12/10

PERFECT POWER SYSTEMS
COMMERCE, CA

TITLE
1Ø PHASE UPS, BLOCK DIAGRAM
STANDARD MODE/ FAST TRANSFER

SIZE DWG 6001-033-03P REV
SCALE: EST. WT: SHT 1 OF 1

SPECIFICATIONS SUBJECT TO CHANGE WITHOUT NOTICE

**SIDE
MOUNT
PROVISION**

**BACK
MOUNTING
PROVISION**

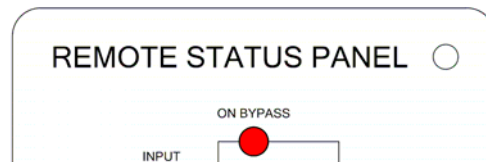


**TO UPS P100 TERMINAL
BLOC
SEE INSTALLATION
INSTRUCTION SHIPPED
WITH THE ASSEMBLY**

**USE
BUMPER
FOR
CONSOL
INSTALL**

Remote Status Panel displays the following:

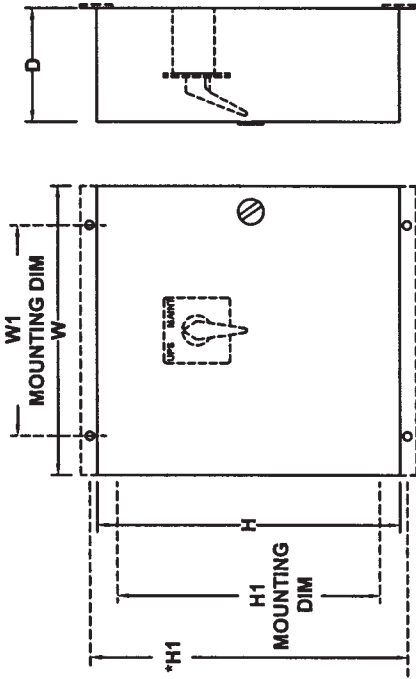
INPUT OK:	Input power is within acceptable range
INVERTER ON:	Inverter is on.
ON BYPASS:	Unit is on bypass mode.
ON BATT:	Unit is running from Battery.
LOW BATT:	Battery voltage is at low voltage before shutdown.
SUM ALARM:	Unit is on critical alarm such as: Over temperature, DC OV/UV.
HORN:	Audible warning for alarm condition.
SILENCE SWITCH:	Silences the audible warning.
LED TEST:	Tests the LED's by push in.



DISPLAY PANEL

**REMOTE STATUS PANEL ASSEMBLY:
9100-1020-06: SINGLE PHASE
9100-1020-07: THREE PHASE**

SINGLE PHASE MAKE BEFORE BREAK EXTERNAL WRAP AROUND BY-PASS SWITCH



PART NO.	AMP	ENCLOSURE SIZE "INCH"			
		W	H	D	W1
3000-044	55 AMP	14	16	8	*16.75
3000-045	110 AMP	14	16	10	*16.75

ENCLOSURE DIM'S

SELECTION CHART FOR SINGLE PHASE UPS

KVA	KVA	KVA	KVA	KVA	KVA	FOR WIRING DIAGRAM SEE DWG
3	5	7.5	10	15	20	
3000-044	3000-044	3000-044	3000-045	3000-045	3000-045	6001-032-11-S

- 1) SWITCH CONTACTS ARE SINGLE PHASE L-NEUTRAL "MAKE BEFORE-BREAK".
- 2) CONTACTS MARKED "UPS" ARE CLOSED IN THE "UPS" POSITION.
- 3) CONTACTS MARKED "MAINT" ARE CLOSED IN THE "MAINT" POSITION.
- 4) WRAP AROUND BY-PASS SWITCH SHOULD BE USED WITH SAME INPUT /OUTPUT VOLTAGE.
- 5) WRAP AROUND BY-PASS SWITCH CAN ONLY BE USED WITHOUT ANY BUILT IN SECONDARY DISTRIBUTION CIRCUIT BREAKERS IN UPS.

PERFECT POWER SYSTEMS

SINGLE PHASE (SELECTION CHART)
EXTERNAL WRAP AROUND
BY-PASS PANEL .55AMP-110AMP

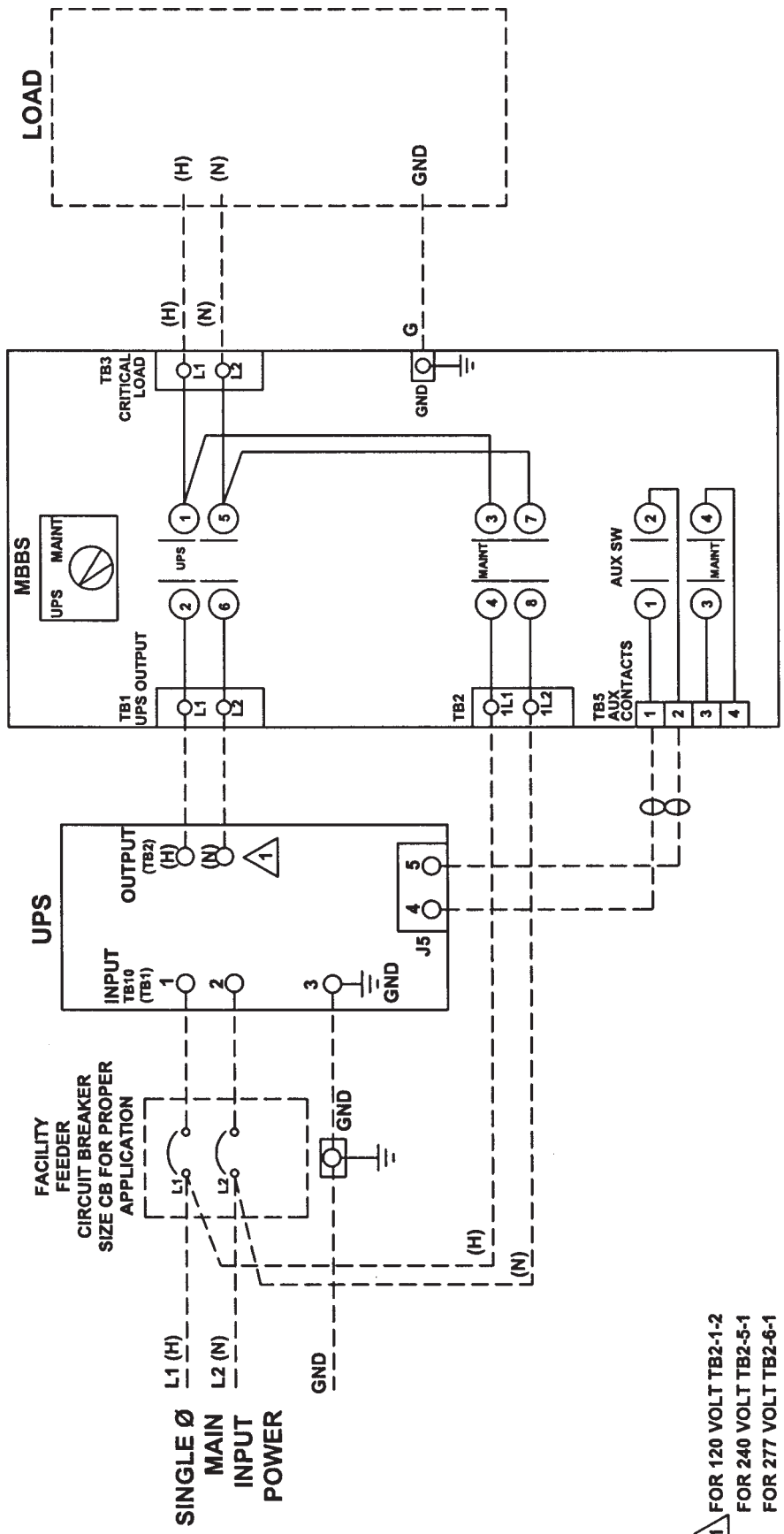
DWG: 6001-032-31 REV: P1

SCALE: Sheet 1 of 1

DRAWINGS:
1. APPROVED AS SUBMITTED:

CADD: SHERRI SHAHSAVARI Date: 1/20/03

SINGLE PHASE MAKE BEFORE BREAK EXTERNAL WRAP AROUND BY-PASS SWITCH



- 1) FOR 120 VOLT TB2-1-2
 FOR 240 VOLT TB2-5-1
 FOR 277 VOLT TB2-6-1
- 2) L3 NOT USED

INCOMING POWER: TO 600 VOLTS AC, SINGLE PHASE, 60HZ
 INTERNAL CABLE:
 55A : #8 AWG (60A)
 110A : #2 AWG (140A)
 TERMINALS ARE SIZED FOR PROPER APPLICATION

PERFECT
 POWER SYSTEMS

DRAWINGS:
 1. APPROVED AS SUBMITTED:

CADD: SHERRI BHAHSAVARI Date: 1/9/03

SINGLE PHASE (WIRING DIAGRAM)
 EXTERNAL WRAP AROUND
 BY-PASS PANEL, 55AMP-110AMP

REV P1
 6001-032-31-S
 1 of 1