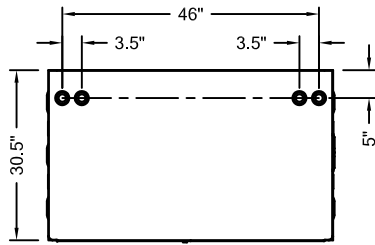


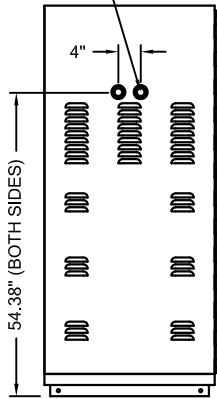
REVISION				
REV	ECO	DESCRIPTION	DATE	APPROVED
E	11649	UPDATED	10/10/17	R.V.

BATTERY CABINET
COLOR: BLACK

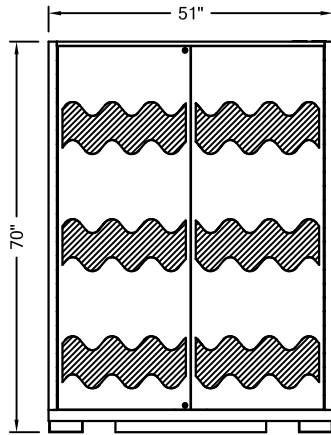


TOP VIEW

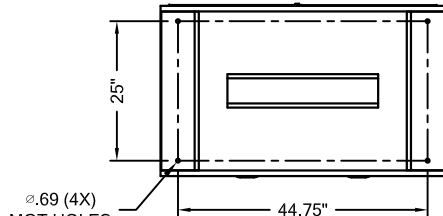
KNOCK OUT
FOR 1", 1.5" & 2"
CONDUIT (TYP)



SIDE

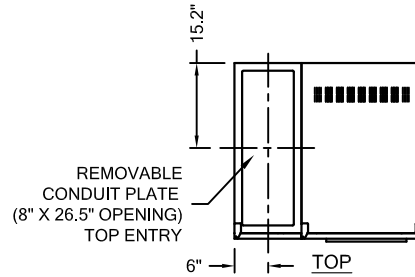


FRONT

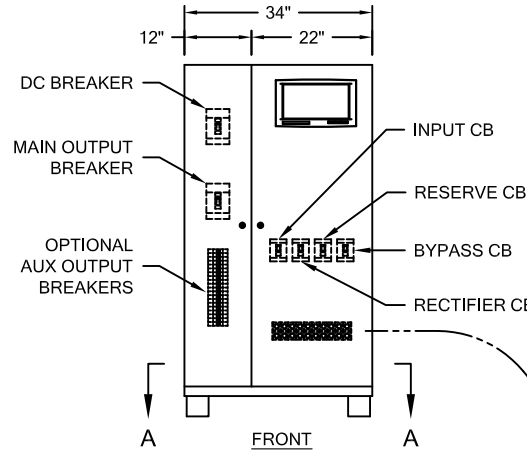


BOTTOM

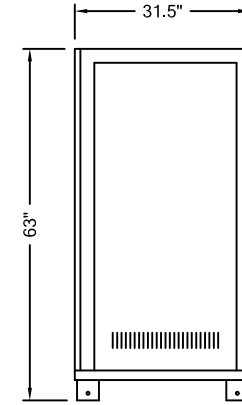
**EMERGENCY LIGHTING
INVERTER CABINET**
COLOR: BLACK
10KVA - 60KVA
(8KW - 48KW)



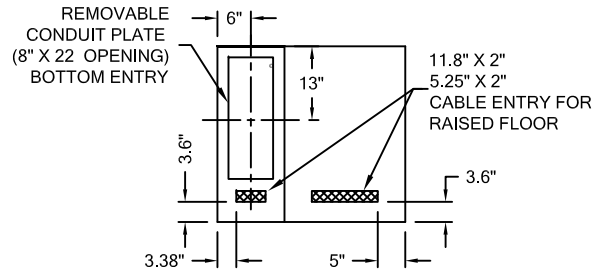
TOP



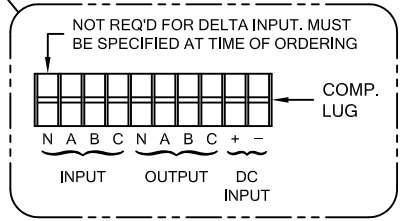
FRONT



RIGHT SIDE



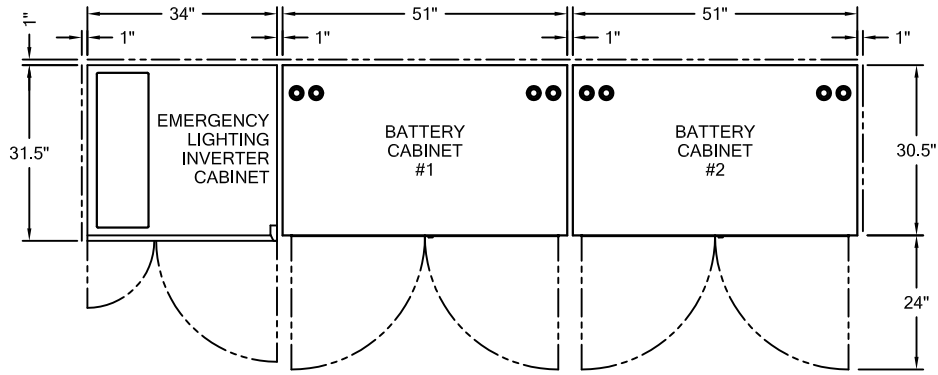
VIEW A-A



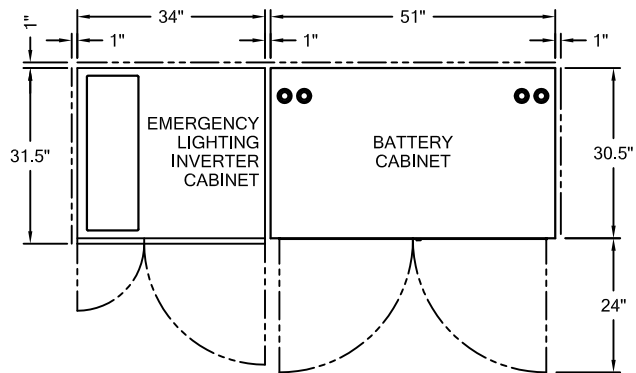
NOTE:

1) KNOCKOUTS ON INVERTER'S
CONDUIT PLATES TO BE DONE
BY INSTALLING CONTRACTOR.

UNLESS OTHERWISE SPECIFIED, DIMENSIONS ARE IN INCHES. TOLERANCES ARE: DECIMALS FRACTIONS ANGLES .XX ± .03 ± 1/64 ± 1/2° .XXX ± .010		PERFECT POWER SYSTEMS LOS ANGELES, CA	
CADD: HAI NGUYEN 5/19/11		TITLE 10KVA - 60KVA, 3PH. INV. WITH 90 MIN. BATT.	
CHKD: HAI NGUYEN 5/19/11	SIZE A	DWG 6001-174P-01	REV E
APPVD: H. BAIK 5/19/11	SCALE:	EST. WT:	SHT 1 OF 2
SPECIFICATIONS SUBJECT TO CHANGE WITHOUT NOTICE			



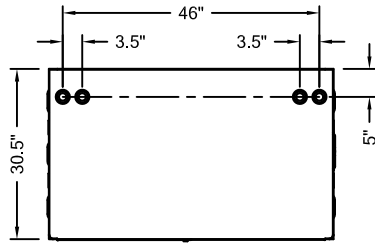
40 KVA (32 KW)	TOP TERMINAL BATTERY
50 KVA (40 KW)	
60 KVA (48 KW)	
50 KVA (40 KW)	FRONT TERM'L BATTERY
60 KVA (48 KW)	



10 KVA (8 KW)	TOP TERMINAL BATTERY
20 KVA (16 KW)	
30 KVA (24 KW)	
10 KVA (8 KW)	FRONT TERMINAL BATTERY
20 KVA (16 KW)	
30 KVA (24 KW)	
40 KVA (32 KW)	

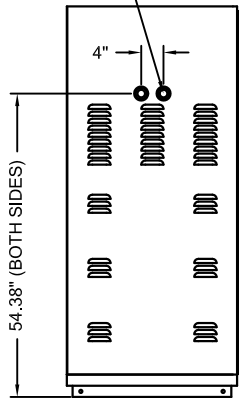
REVISION				
REV	ECO	DESCRIPTION	DATE	APPROVED
E	11649	UPDATED	10/10/17	R.V.

BATTERY CABINET
COLOR: BLACK

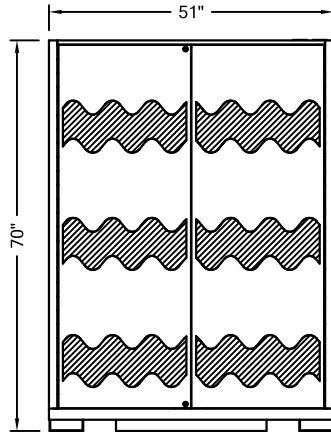


TOP VIEW

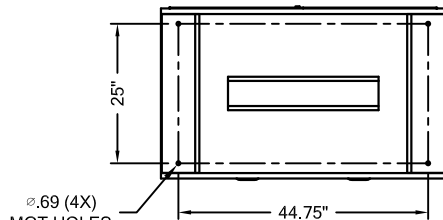
KNOCK OUT FOR 1", 1.5" & 2" CONDUIT (TYP)



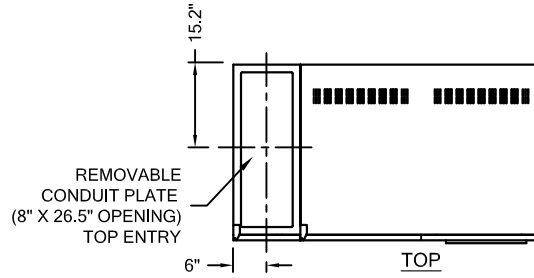
SIDE



FRONT

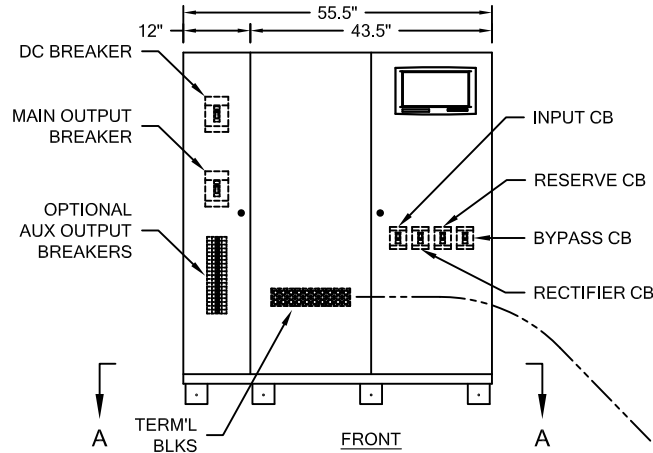


BOTTOM

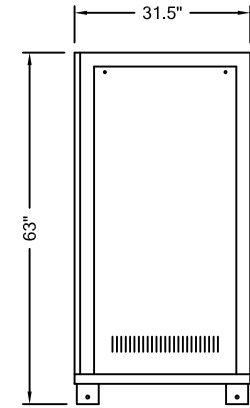


TOP

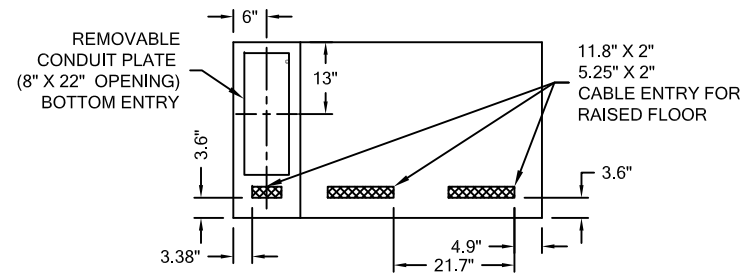
**EMERGENCY LIGHTING
INVERTER CABINET**
COLOR: BLACK
80KVA - 160KVA
(64KW - 128KW)



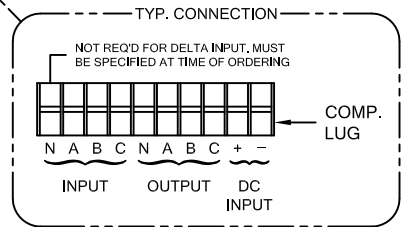
FRONT



RIGHT SIDE



VIEW A-A

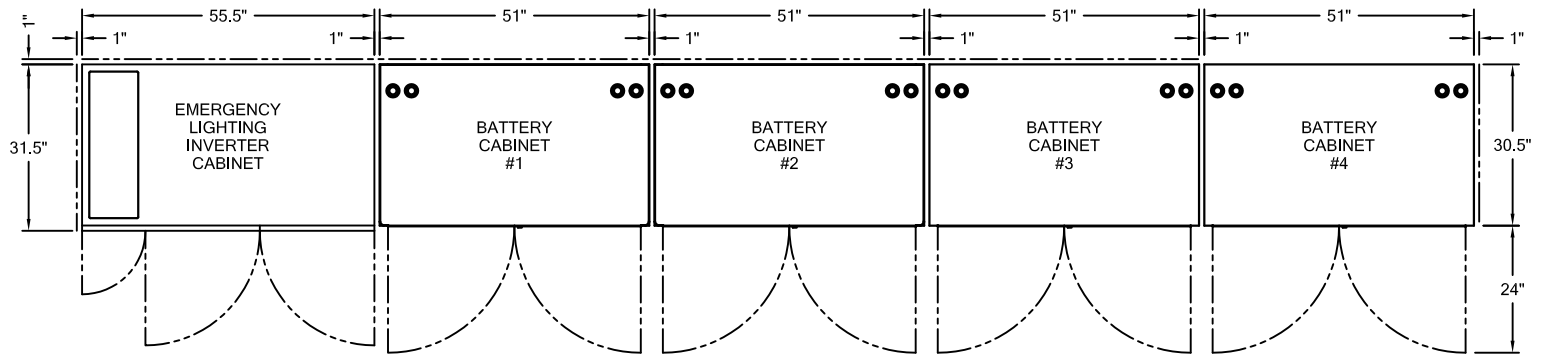


NOTE:
1) KNOCKOUTS ON INVERTER'S CONDUIT PLATES TO BE DONE BY INSTALLING CONTRACTOR.

UNLESS OTHERWISE SPECIFIED, DIMENSIONS ARE IN INCHES. TOLERANCES ARE: DECIMALS FRACTIONS ANGLES .XX ± .03 ± 1/64 ± 1/2° .XXX ± .010		PERFECT POWER SYSTEMS LOS ANGELES, CA	
CADD: HAI NGUYEN 5/19/11		TITLE: 80KVA - 160KVA, 3PH. INV. WITH 90 MIN. BATT.	
CHKD: HAI NGUYEN 5/19/11		SIZE: A	DWG: 6001-174P-02 REV: E
APPVD: H. BAIK 5/19/11		SCALE:	EST. WT: SHT 1 OF 3
SPECIFICATIONS SUBJECT TO CHANGE WITHOUT NOTICE			

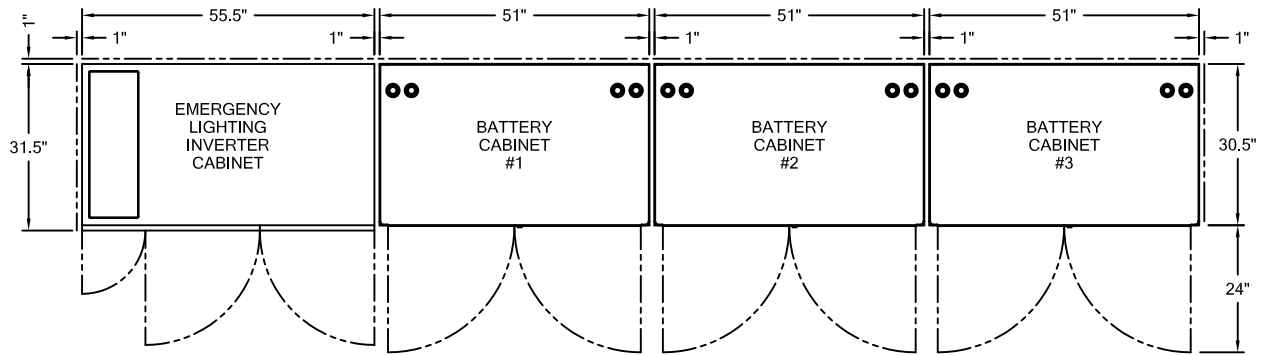
TOP TERM'L
BATTERY
120 KVA (96 KW)

FRONT TERM'L
BATTERY
160 KVA (128KW)

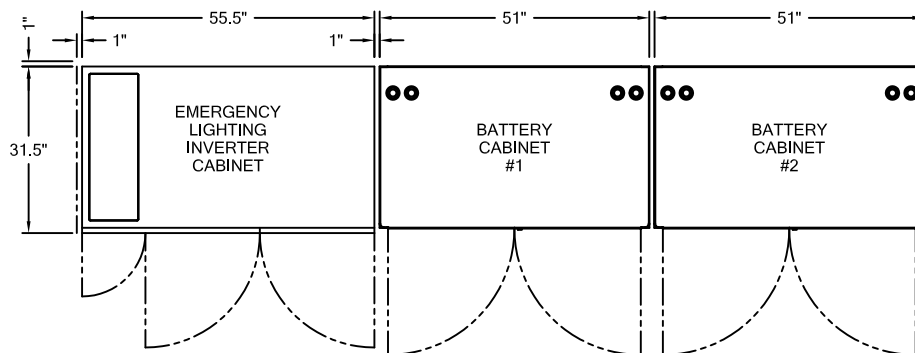


TOP TERM'L
BATTERY
100KVA (80 KW)
80KVA (64 KW)

FRONT TERM'L
BATTERY
100 KVA (80 KW)
120 KVA (96 KW)

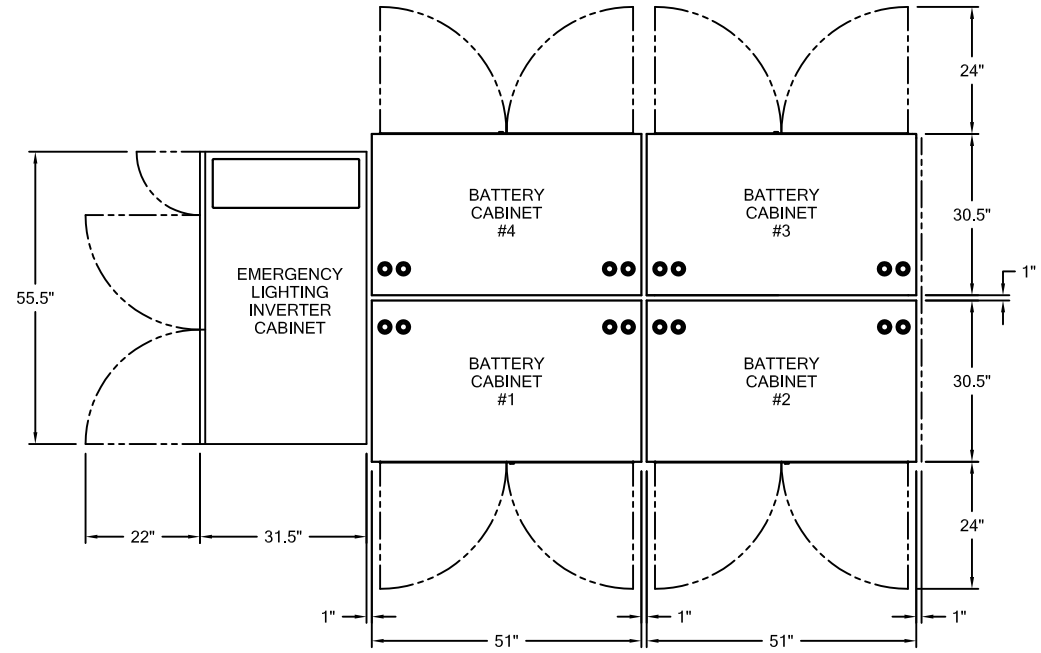
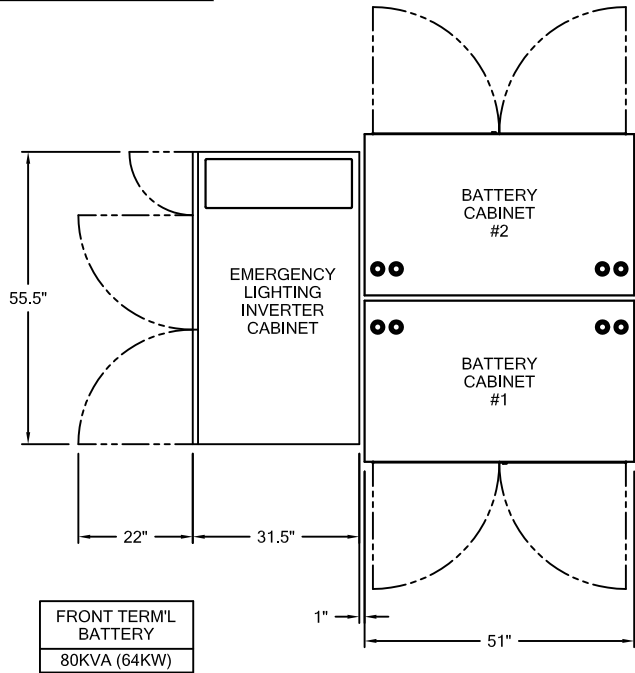


FRONT TERM'L
BATTERY
80 KVA (64 KW)



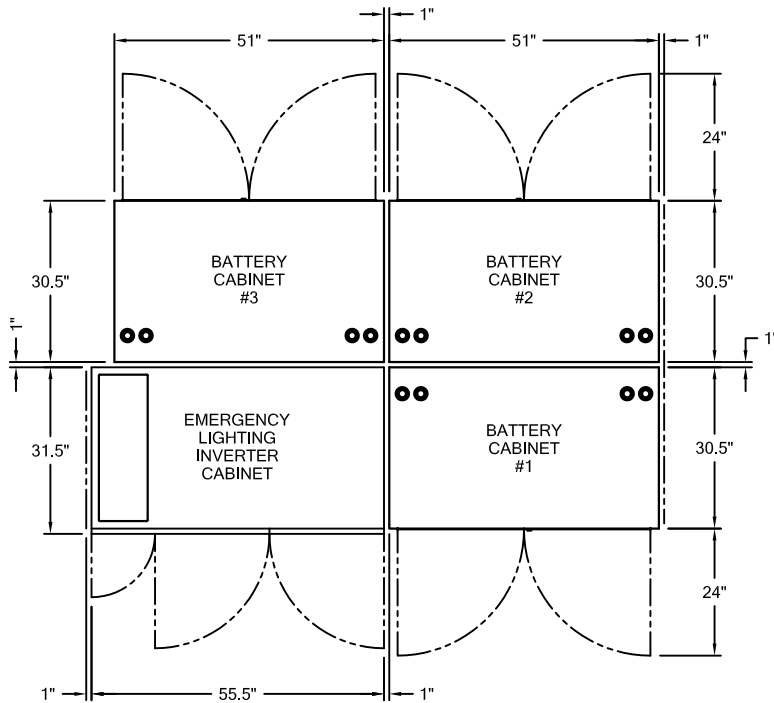
LAYOUT
CONFIGURATION
#1

SIZE A	DWG 6001-174P-02	REV E
SCALE:	EST. WT:	SHT 2 OF 3



TOP TERM'L BATTERY
80 KVA (64 KW)
100 KVA (80 KW)

FRONT TERM'L BATTERY
100 KVA (80 KW)
120 KVA (96 KW)



TOP TERM'L BATTERY
120 KVA (96 KW)

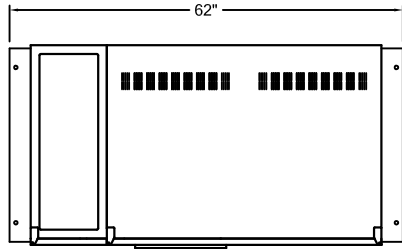
FRONT TERM'L BATTERY
160 KVA (128KW)

LAYOUT CONFIGURATION #2

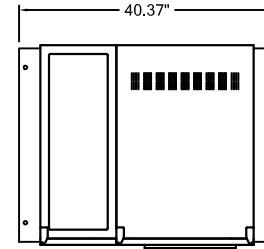
SIZE	DWG	6001-174P-02	REV
A			E
SCALE:	EST. WT:	SHT 3 OF 3	

PERFECT POWER PROPRIETARY
CONFIDENTIAL INFORMATION

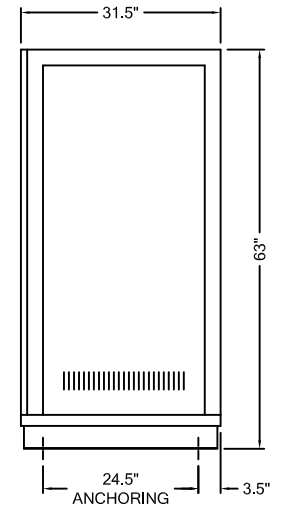
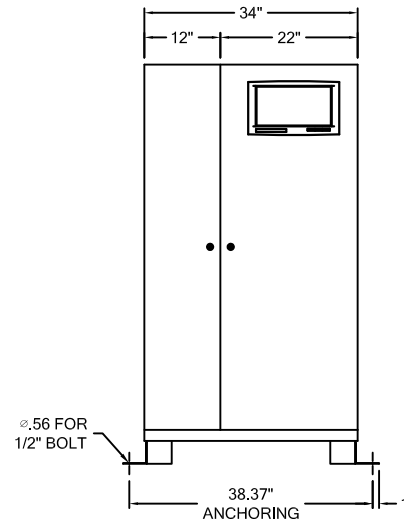
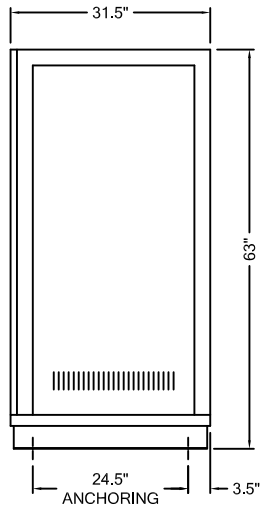
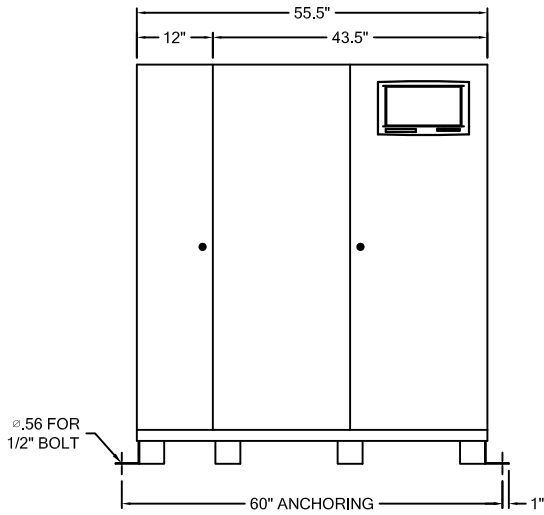
REVISION				
REV	ECO	DESCRIPTION	DATE	APPROVED
A	11649	RELEASE		R.V.



INVERTER CABINET
WITH SEISMIC BRACKETS
80KVA - 160KVA
(64KW - 128KW)



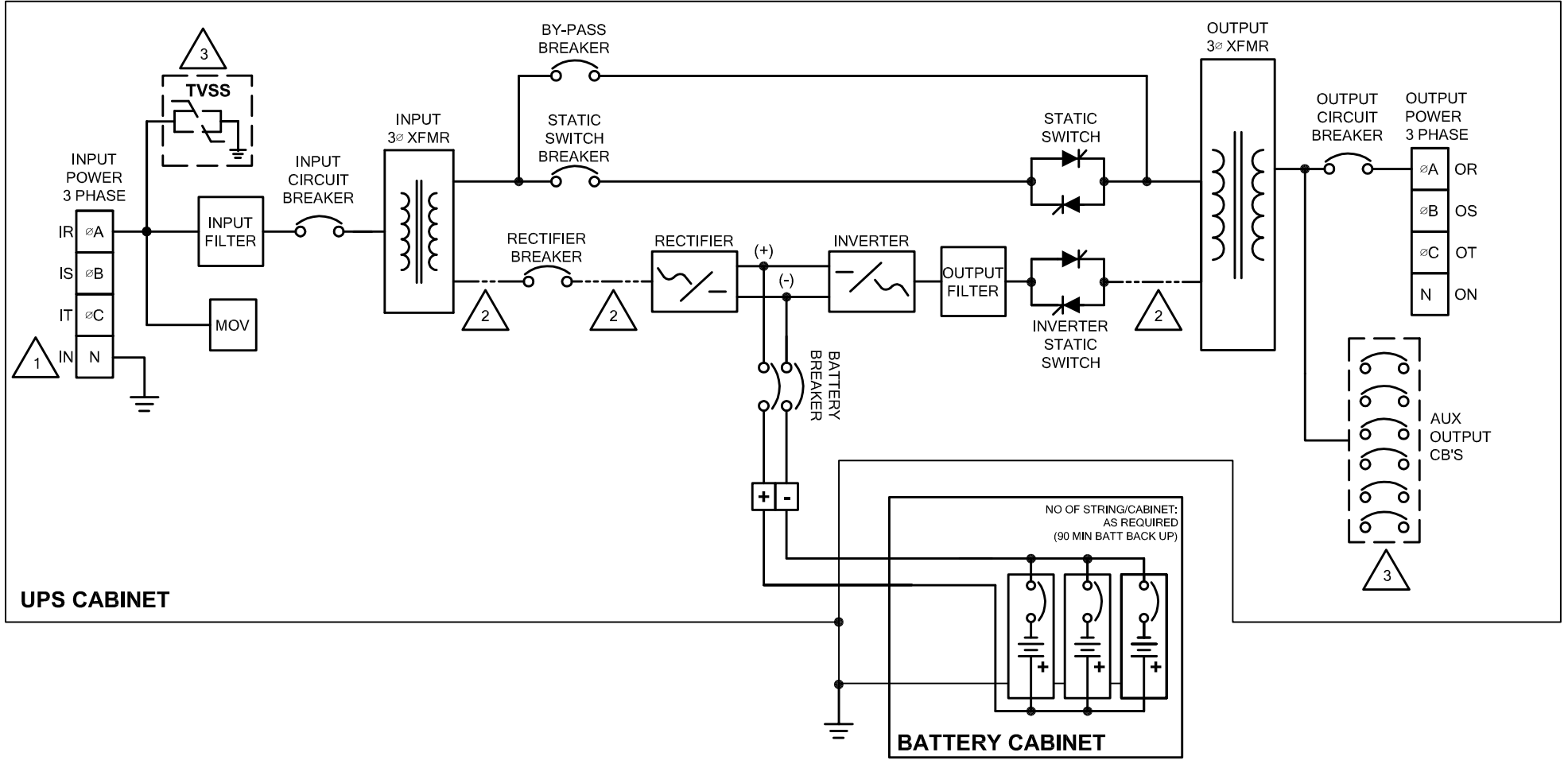
INVERTER CABINET
WITH SEISMIC BRACKETS
10KVA - 60KVA
(8KW - 48KW)



UNLESS OTHERWISE SPECIFIED, DIMENSIONS ARE IN INCHES. TOLERANCES ARE: DECIMALS FRACTIONS ANGLES .XX ± .03 ± 1/64 ± 1/2° .XXX ± .010			PERFECT POWER SYSTEMS LOS ANGELES, CA TITLE INVERTER WITH SEISMIC	
DRWN: HAI NGUYEN	10/10/17	SIZE	DWG	REV
CHKD: HAI NGUYEN	10/10/17	B	6001-412P	A
APPVD: R. VERA	10/10/17	SCALE:	EST. WT:	SHT 1 OF 1
SPECIFICATIONS SUBJECT TO CHANGE WITHOUT NOTICE				

SINGLE SOURCE, WYE/DELTA INPUT UNIT

REVISION				
REV	ECO	DESCRIPTION	DATE	APPROVED
A	10024	NEW RELEASE	4/23/13	H.BAIK
B	11137	REVISED NOTE 1 TO DELTA IS OPTION	4/7/16	H.BAIK



UPS CABINET

BATTERY CABINET

NOTES: (UNLESS OTHERWISE SPECIFIED)

- 1 WYE INPUT (4 WIRES), INPUT: ØA, ØB, ØC, N or IR, IT, IS, IN .
DELTA (3 WIRES) INPUT (OPTION): "N" or "IN" IS GND.
- 2 FOR GREEN MODES UNITS ONLY, POWER FLOW FROM INVERTER STATIC SWITCH WHEN INPUT POWER FAILS.
- 3 DOTTED BLOCKS ARE OFFERED AS OPTION.
- 4 SHOWN ONLY SINGLE PHASE (TYP).

UNLESS OTHERWISE SPECIFIED,
DIMENSIONS ARE IN INCHES.
TOLERANCES ARE:
DECIMALS FRACTIONS ANGLES
.XX ± .03 ± 1/64 ± 1/2"
.XXX ± .010

PERFECT POWER SYSTEMS
COMMERCE, CA

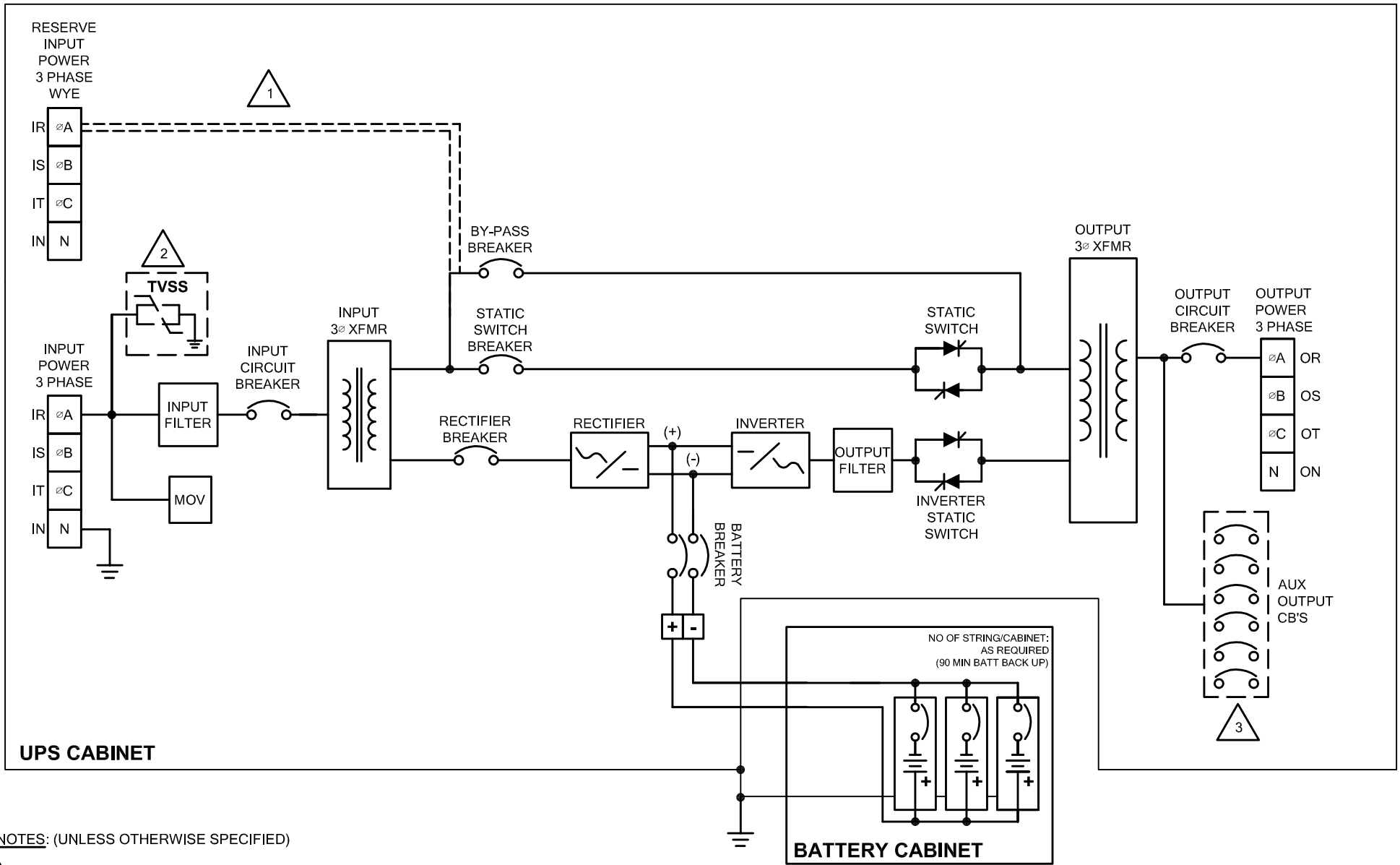
TITLE **THREE PHASE UPS (POWER RIDE 4)
BLOCK DIAGRAM**

CADD:S.SHAHSAVARI	8/9/12
CHKD:S.SHAHSAVARI	8/9/12
APPVD: H.BAIK	8/9/12

SIZE A	DWG 6001-235P	REV B
SCALE:	EST. WT:	SHT 1 OF 3

SPECIFICATIONS SUBJECT TO CHANGE WITHOUT NOTICE

DUAL SOURCE WYE, WYE INPUT UNIT



UPS CABINET

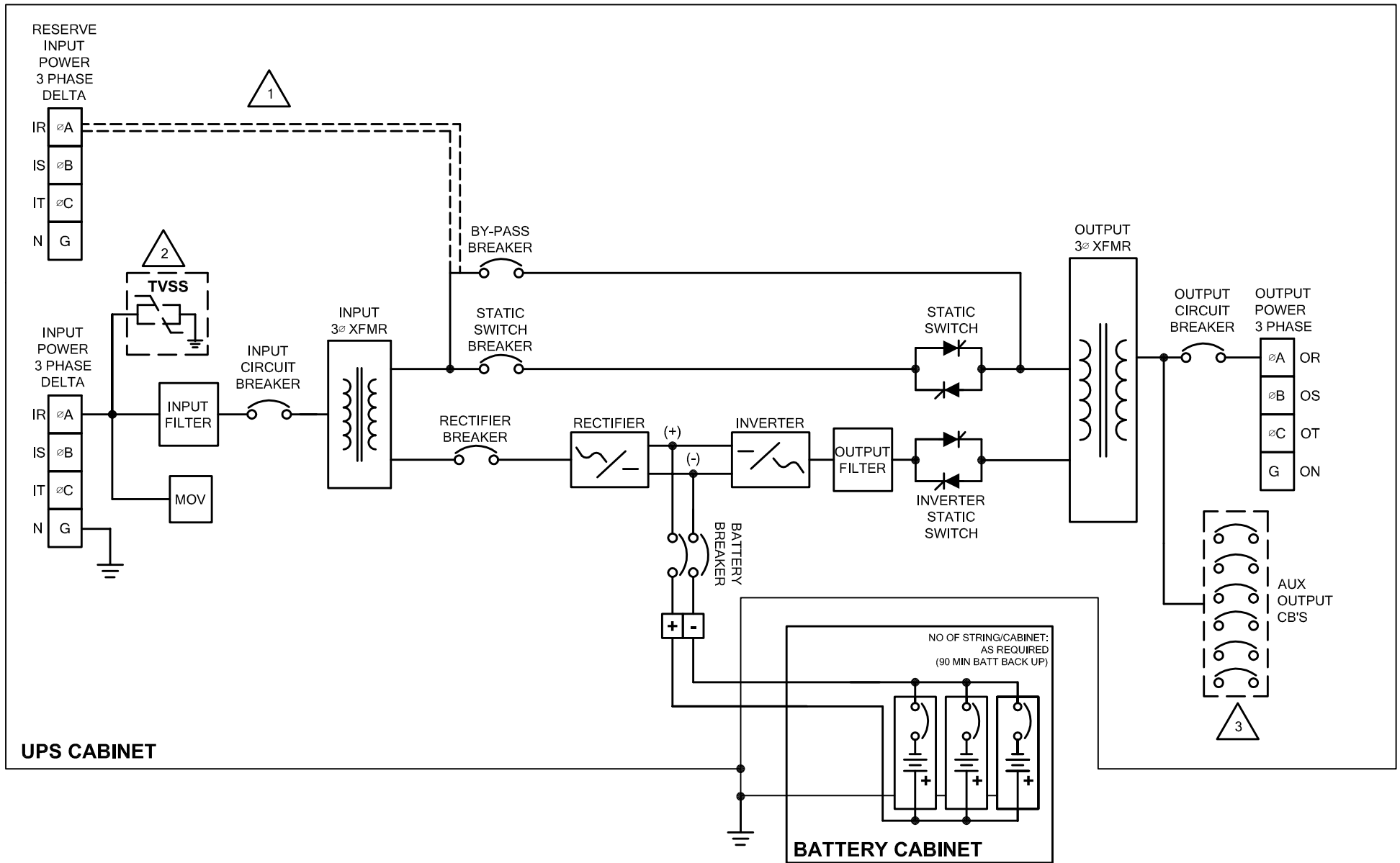
BATTERY CABINET

NOTES: (UNLESS OTHERWISE SPECIFIED)

- 1 DOUBLE DOTTED LINE: FOR DUAL INPUT POWER SOURCE, CONNECT BY-PASS CB/STATIC SWITCH CB TO RESERVE INPUT POWER TERMINAL.
- 2 DOTTED BLOCKS ARE OFFERED AS OPTION.
- 3 SHOWN ONLY SINGLE PHASE (TYP).

SIZE	DWG	REV
A	6001-235P	B
SCALE:	EST. WT:	SHT 2 OF 3

DUAL SOURCE DELTA, DELTA INPUT UNIT



NOTES: (UNLESS OTHERWISE SPECIFIED)

1 DOUBLE DOTTED LINE: FOR DUAL INPUT POWER SOURCE, CONNECT BY-PASS CB/STATIC SWITCH CB TO RESERVE INPUT POWER TERMINAL.

2 DOTTED BLOCKS ARE OFFERED AS OPTION.

3 SHOWN ONLY SINGLE PHASE (TYP).

SIZE	DWG	6001-235P	REV
A			B
SCALE:	EST. WT:	SHT 3 OF 3	