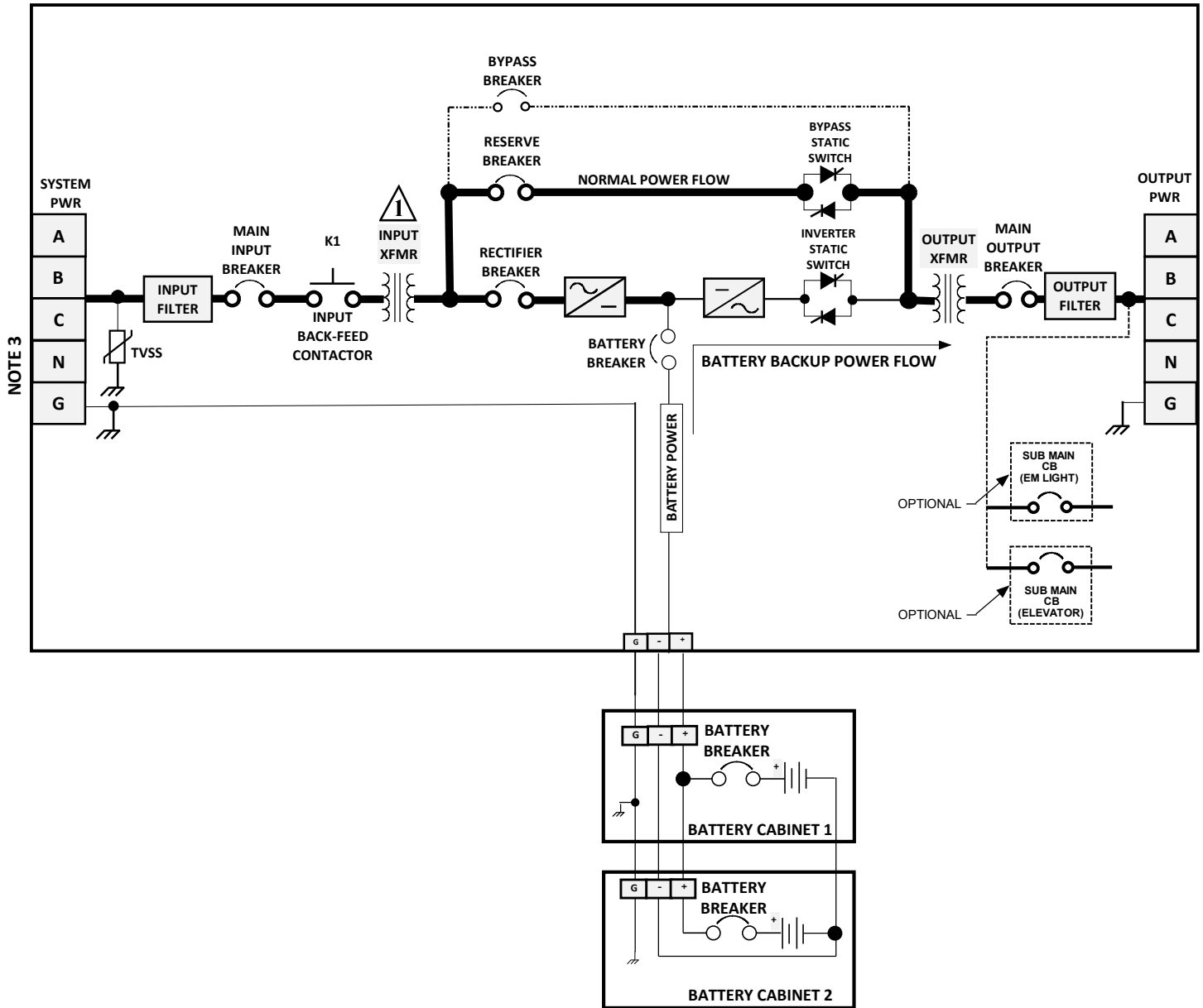


POWER RIDE ELEVATOR REGEN TYPICAL SINGLE LINE DIAGRAM



NOTE(S):

1. Bypass and Inverter Static Switches will be powered from the *Input Transformer* for different input and output voltage configurations.

2. Optional Delta Units are available. Neutral not required.

3. Battery Cabinet Quantity might vary depending on the Battery type.

SPECIFICATION SUBJECT TO CHANGE WITHOUT NOTICE



TYPICAL POWER RIDE
ELEVATOR REGEN
SINGLE LINE DIAGRAM

DRAWN : TH

11/22/24

APPVD : SS

11/22/24

720-E-TD-010

REVISION

B

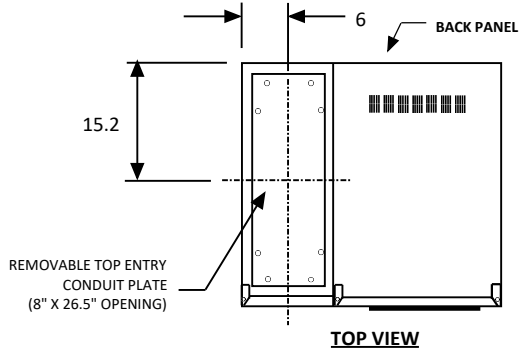
SHEET

1 OF 1

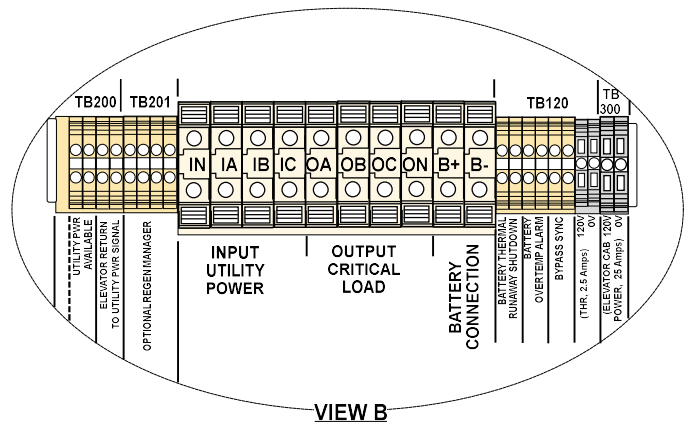
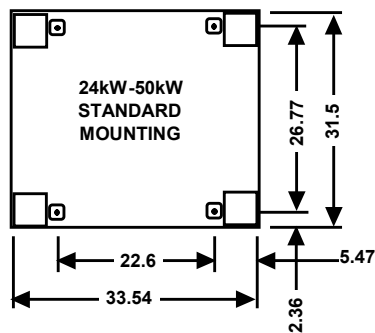
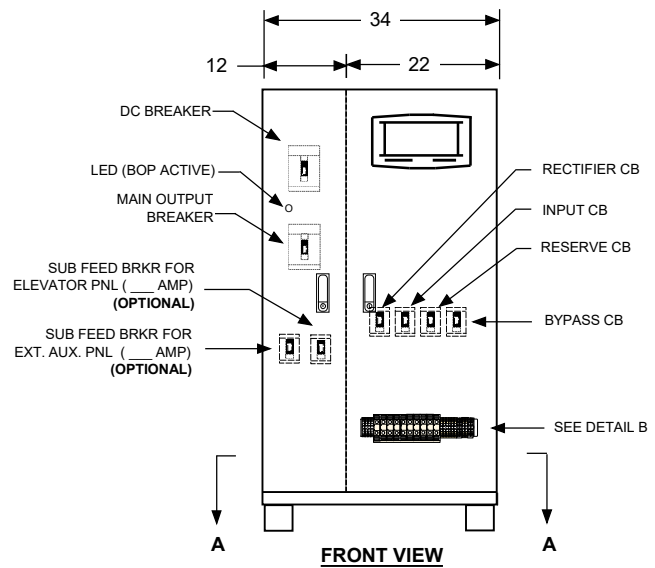
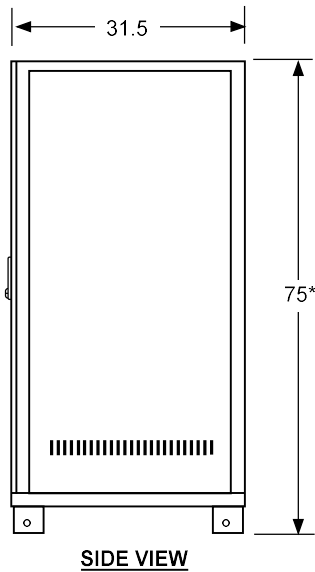
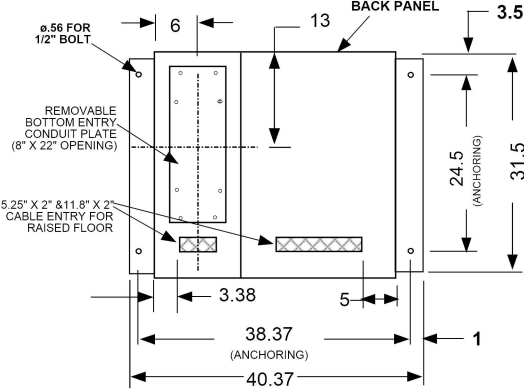
POWER RIDE ELEVATOR REGEN

ELECTRONIC CABINET ONLY (24KW - 64KW)

□ STANDARD MOUNTING



□ INSTALLATION WITH SEISMIC BRACKETS FOR ZONE 4



NOTE(S):

- 1) CONSTRUCTION: INDOOR, COLOR BLACK
- 2) KNOCKOUTS ON CONDUIT PLATES TO BE DONE BY INSTALLING CONTRACTOR
- 3) DIMENSIONS ARE IN INCHES
- 4) *SHAKER TABLE TESTED (HCAI OSP) UNITS HAVE A HEIGHT OF 63". CONSULT THE FACTORY MORE FOR DETAILS

SPECIFICATION SUBJECT TO CHANGE WITHOUT NOTICE

INPUT NEUTRAL (IN) NOT REQ'D FOR DELTA INPUT.
MUST BE SPECIFIED AT THE TIME OF ORDERING



POWER RIDE
ELEVATOR REGEN
ELECTRONIC CABINET

DRAWN : TH
APPVD : SS

11/22/24
11/22/24

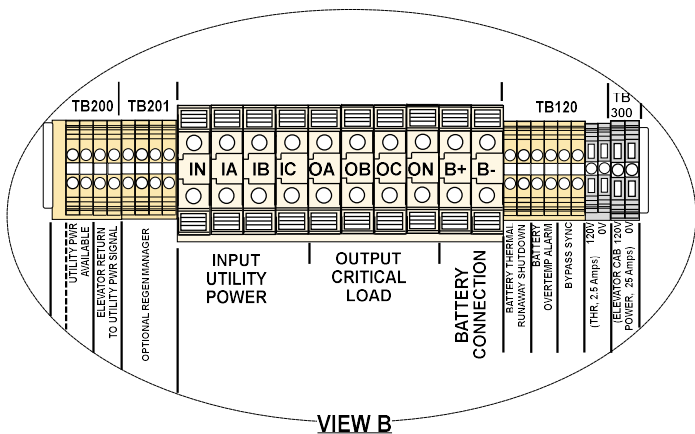
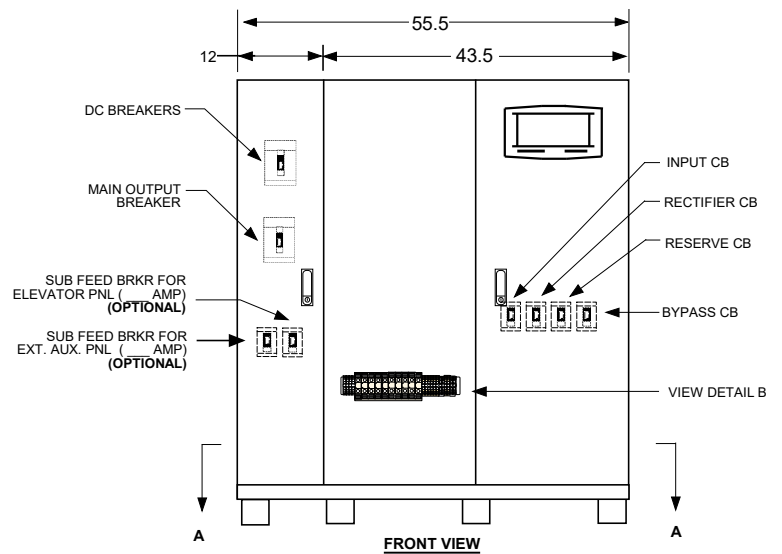
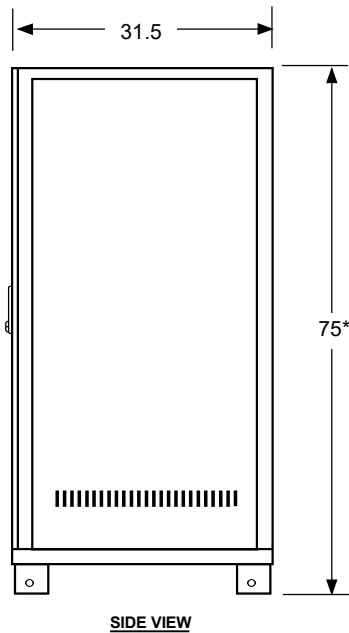
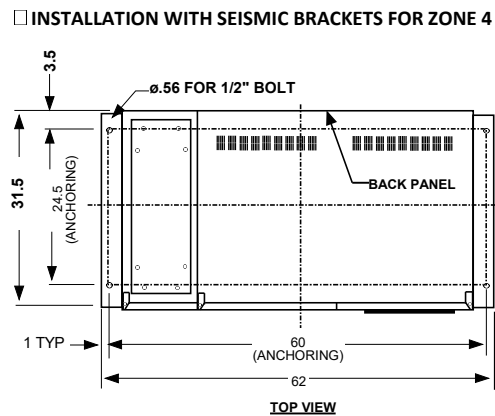
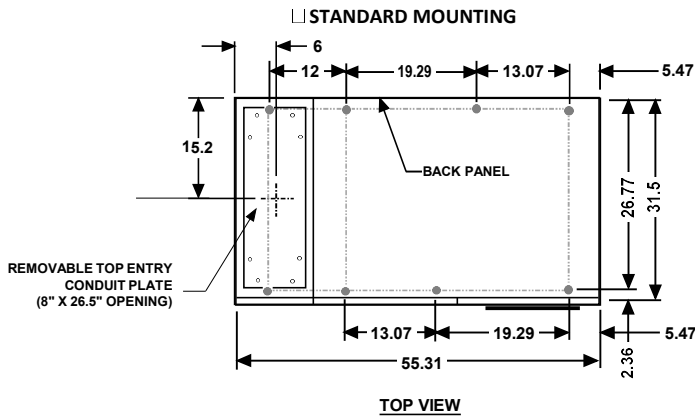
720-E-TD-011

REVISION
B

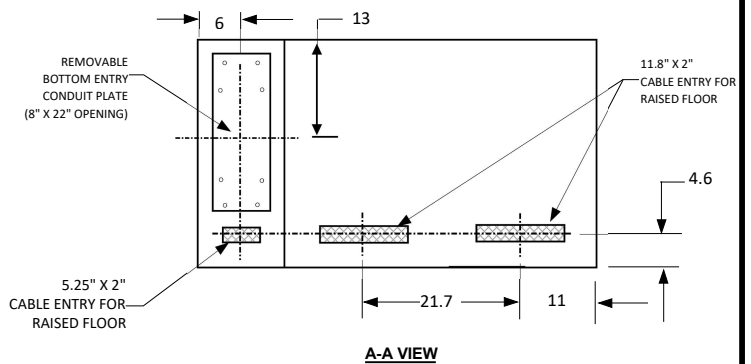
SHEET
1 OF 1

POWER RIDE ELEVATOR REGEN

**ELECTRONIC
CABINET ONLY
(64KW - 128KW)**



INPUT NEUTRAL (IN) NOT REQ'D FOR DELTA INPUT.
MUST BE SPECIFIED AT THE TIME OF ORDERING



NOTE(S):

- 1) CONSTRUCTION: INDOOR, COLOR BLACK
- 2) KNOCKOUTS ON CONDUIT PLATES TO BE DONE BY INSTALLING CONTRACTOR
- 3) DIMENSIONS ARE IN INCHES
- 4) *SHAKER TABLE TESTED (HCAI OSP) UNITS HAVE A HEIGHT OF 63". CONSULT THE FACTORY FOR MORE DETAILS

SPECIFICATION SUBJECT TO CHANGE WITHOUT NOTICE



POWER RIDE
ELEVATOR REGEN
ELECTRONIC CABINET

DRAWN : TH
APPVD : SS

11/22/24
11/22/24

720-E-TD-012

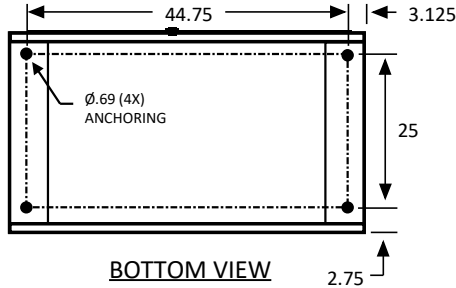
REVISION
B

SHEET
1 OF 1

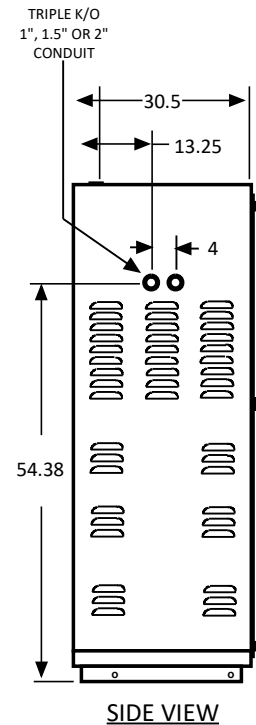
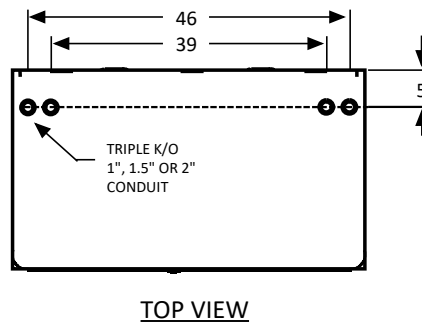
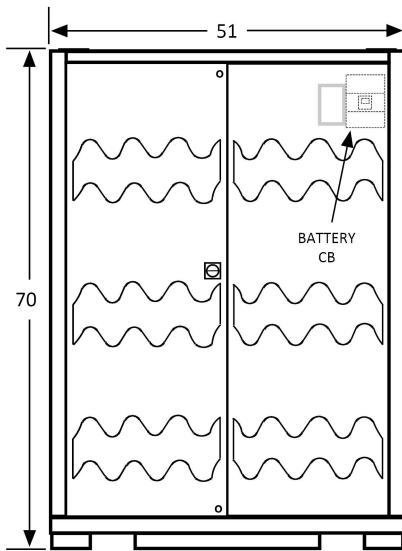
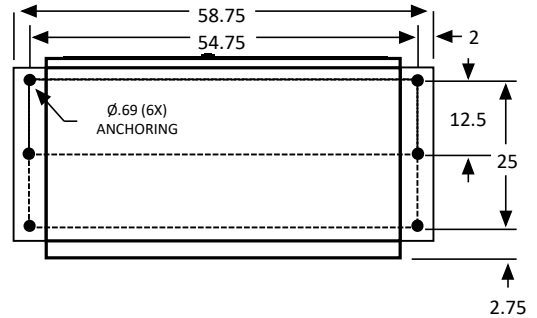
BATTERY CABINET

STANDARD VRLA/LONG LIFE (OPTIONAL) BATTERY

□ STANDARD MOUNTING



□ INSTALLATION WITH SEISMIC BRACKETS FOR ZONE 4 BOTTOM VIEW



NOTE(S):

- 1) CONSTRUCTION: NEMA1 INDOOR
- 2) OPTIONAL SEISMIC BRACKETS AVAILABLE:
ANCHORS FOR EXTERNAL SEISMIC BRACKET:
 1. USE 1/2" DIA x 2-3/8" MIN. EMBED. HILTI KB-TZ. ICC ESR-1917 OR APPROVED EQUAL (6) TOTAL PER CABINET.
 2. CONCRETE: 5" THICK x 2,500 PSI. (MIN. REQ'D).
 3. SOIL BEARING PRESSURE: 500 PSF. (MIN. REQ'D).

FOR ALL DETAILS REFER TO SEISMIC DWG. FOR EACH CABINET MOUNTING

3) DIMENSIONS ARE IN INCHES

SPECIFICATION SUBJECT TO CHANGE WITHOUT NOTICE



**POWER RIDE
ELEVATOR REGEN
ELECTRONIC CABINET**

DRAWN : TH	11/22/24
APPVD : SS	11/22/24

720-E-TD-013

REVISION
B

SHEET
1 OF 3

BATTERY TYPE	
1	2

□ STANDARD VRLA

□ LONG LIFE (OPTIONAL)

☐ HI-TEMP (OPTIONAL)☐ **US-MADE (OPTIONAL)**

UNIT CAPACITY SELECTION
(BASED ON MAXIMUM INRUSH/STARTING CURRENT)

<input type="checkbox"/> 30KVA/24KW	<input type="checkbox"/> 40KVA/32KW	<input type="checkbox"/> 50KVA/40KW	<input type="checkbox"/> 60KVA/50KW
-------------------------------------	-------------------------------------	-------------------------------------	-------------------------------------

☐ 40KVA/32KW

☐ 50KVA/40KW

☐ 60KVA/50KW

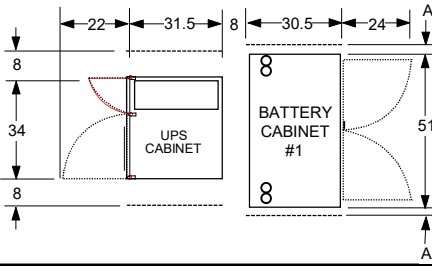
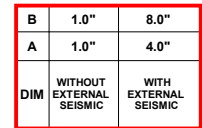
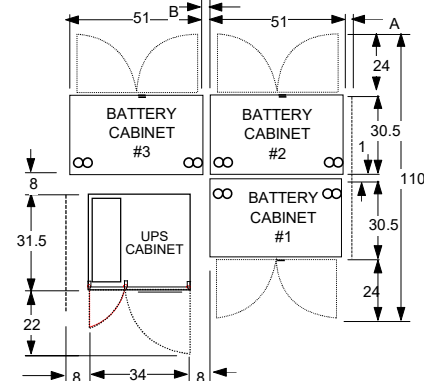
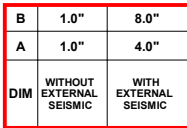
*BATTERY BACKUP IS BASED ON STEADY STATE CURRENT IN KW
(EACH CABINET TYPICALLY PROVIDES A MAXIMUM OF 48 KW FOR 60 MINUTES OR 24 KW FOR 120 MINUTES)

☐ 1 CABINET ☐ 2 CABINETS ☐ 3 CABINETS ☐ 4 CABINETS

SINGLE CABINET LAYOUTS

B	1.0"	8.0"
A	1.0"	4.0"
DIM	WITHOUT EXTERNAL SEISMIC	WITH EXTERNAL SEISMIC

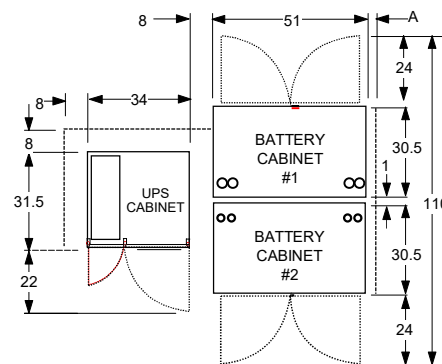
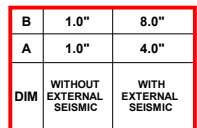
The diagram illustrates two single cabinet layouts. The left layout is for a configuration without external seismic protection, showing a UPS Cabinet and a Battery Cabinet #1 with dimensions 8, 34, 8, 51, A, 8, 31.5, 22, 30.5, 24. The right layout is for a configuration with external seismic protection, showing a UPS Cabinet and a Battery Cabinet #1 with dimensions 8, 22, 31.5, 8, 30.5, 24, A, 8, 34, 8, 51. The diagrams include dashed lines for seismic protection and curved arrows indicating movement.

[illegible]

DOUBLE CABINET LAYOUTS

The technical drawings illustrate the dimensions for double cabinet layouts. The top drawing shows a front view with a UPS Cabinet on the left and two Battery Cabinets (#1 and #2) on the right. The bottom drawing shows a side view of the same layout. Dimensions are provided in inches.

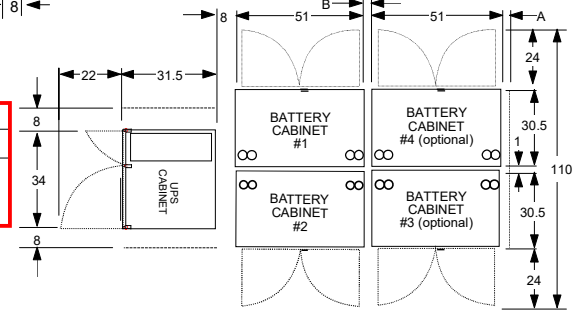
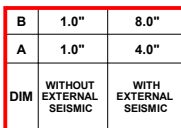
	B	1.0"	8.0"
A	1.0"	4.0"	
DIM	WITHOUT EXTERNAL SEISMIC	WITH EXTERNAL SEISMIC	



FOUR CABINET LAYOUTS

The diagram illustrates four different cabinet layouts for a UPS system. The top layout shows a row of four battery cabinets (#1 to #4) with a UPS cabinet on the left. Dimensions include a total width of 110 inches, with individual cabinet widths of 34 inches and gaps of 8 inches. The height is 31.5 inches. The bottom layout shows a 2x2 grid of cabinets, with the top row containing battery cabinets #1 and #4 (optional), and the bottom row containing battery cabinets #2 and #3 (optional). The UPS cabinet is shown on the left. Dimensions are consistent with the top layout, with a total width of 110 inches and a height of 31.5 inches.

DIM	WITHOUT EXTERNAL SEISMIC	WITH EXTERNAL SEISMIC
B	1.0"	8.0"
A	1.0"	4.0"



	POWER RIDE ELEVATOR REGEN ELECTRONIC CABINET
---	---

DRAWN : TH	11/22/24
APPVD : SS	11/22/24

720-E-TD-013

REVISION B	SHEET 2 OF 3
---------------	-----------------

1

BATTERY TYPE

☐ STANDARD VRLA

☐ LONG LIFE (OPTIONAL)

☐ HI-TEMP (OPTIONAL)

☐ US-MADE (OPTIONAL)

UNIT CAPACITY SELECTION

(BASED ON MAXIMUM INRUSH/STARTING CURRENT)

☐ 80KVA/64KW

☐ 100KVA/80KW

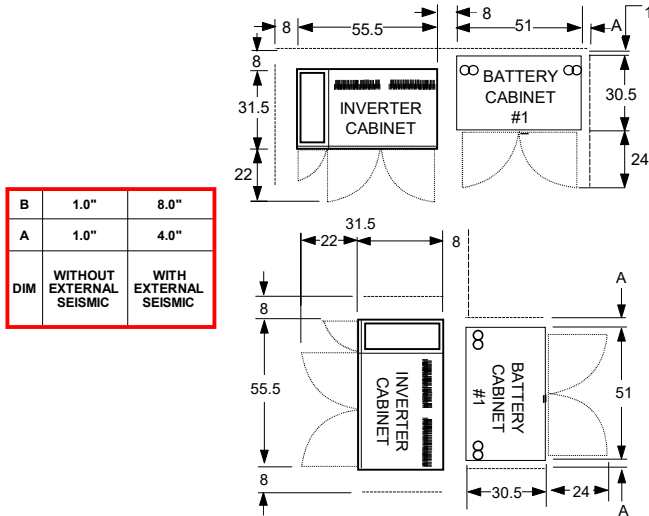
☐ 120KVA/96KW

☐ 160KVA/128KW

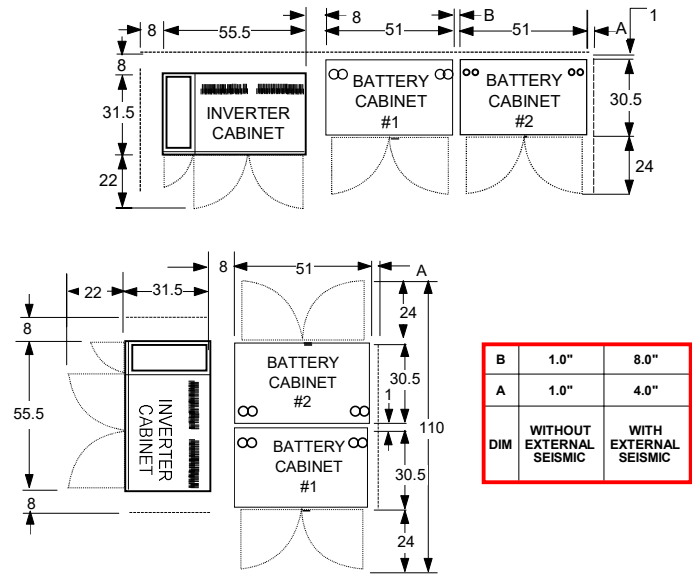
*BATTERY BACKUP IS BASED ON STEADY STATE CURRENT IN KW
(EACH CABINET TYPICALLY PROVIDES A MAXIMUM OF 48 KW FOR 60 MINUTES OR 24 KW FOR 120 MINUTES)

☐ 1 CABINET ☐ 2 CABINETS ☐ 3 CABINETS ☐ 4 CABINETS

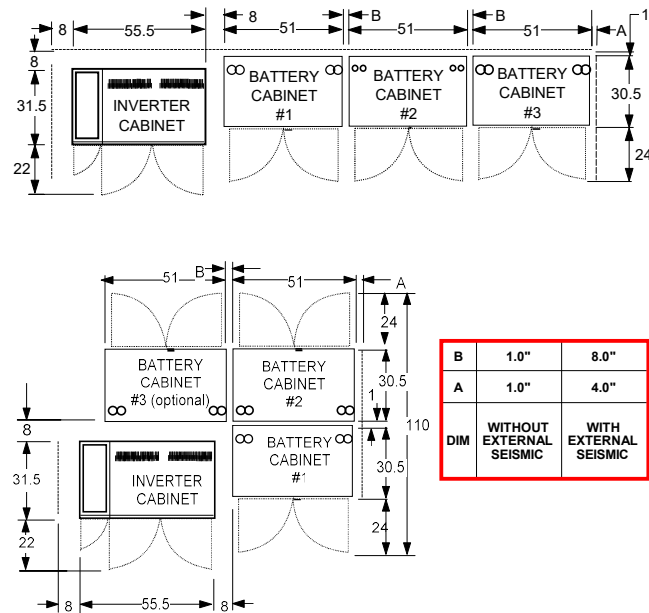
SINGLE CABINET LAYOUTS



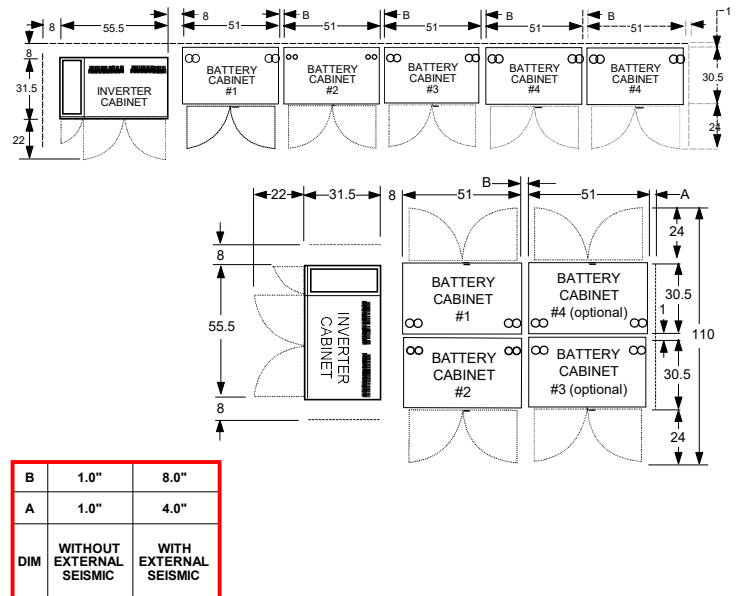
DOUBLE CABINET LAYOUTS



THREE CABINET LAYOUTS



FOUR CABINET LAYOUTS



SPECIFICATION SUBJECT TO CHANGE WITHOUT NOTICE



POWER RIDE
ELEVATOR REGEN
ELECTRONIC CABINET

DRAWN : TH

11/22/24

APPVD : SS

11/22/24

720-E-TD-013

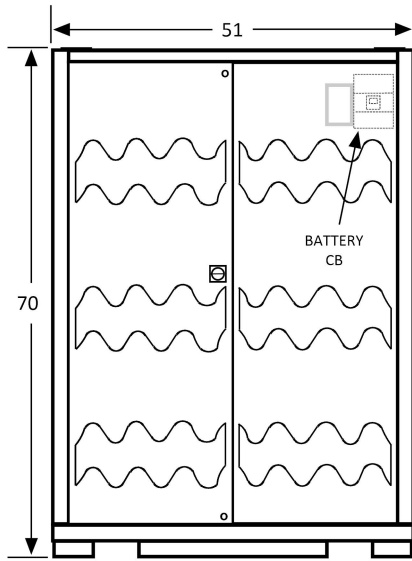
REVISION

B

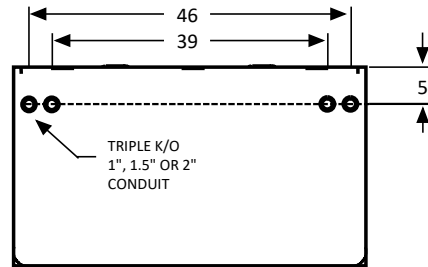
SHEET

3 OF 3

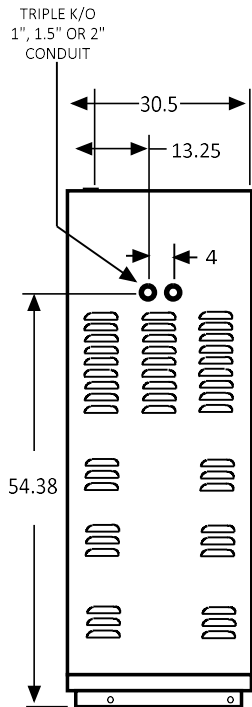
OPTIONAL INTEGRATED BRACKETS FOR BATTERY CABINET ONLY



FRONT VIEW



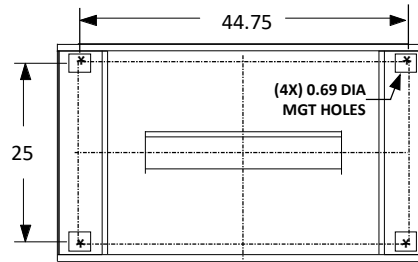
TOP VIEW



SIDE VIEW

INTEGRATED SEISMIC BRACKET INSTALLATION

BOTTOM VIEW



BOTTOM VIEW

* - DENOTES ANCHOR LOCATION

NOTE(S):

1) CONSTRUCTION: NEMA1 INDOOR

ANCHORS FOR INTEGRATED SEISMIC MOUNTING:

1. USE 5/8" DIA x 3-3/4" MIN. EMBED. HILTI KB-TZ ANCHORS, ICC ESR-1917 (LARR#25701) OR APPROVED EQUAL (4) TOTAL PER CABINET, (2) PER ANCHOR BRACKET
2. CONCRETE 5" THICK x 2,500 PSI (MIN. REQ'D).
3. SOIL BEARING PRESSURE 500 PSF (MIN. REQ'D)

FOR ALL DETAILS REFER TO SEISMIC DWG. FOR EACH CABINET MOUNTING

2) DIMENSIONS ARE IN INCHES

SPECIFICATION SUBJECT TO CHANGE WITHOUT NOTICE



**POWER RIDE
ELEVATOR REGEN
ELECTRONIC CABINET**

DRAWN : TH	11/22/24
APPVD : SS	11/22/24

720-E-TD-014

REVISION
A

SHEET
1 OF 1